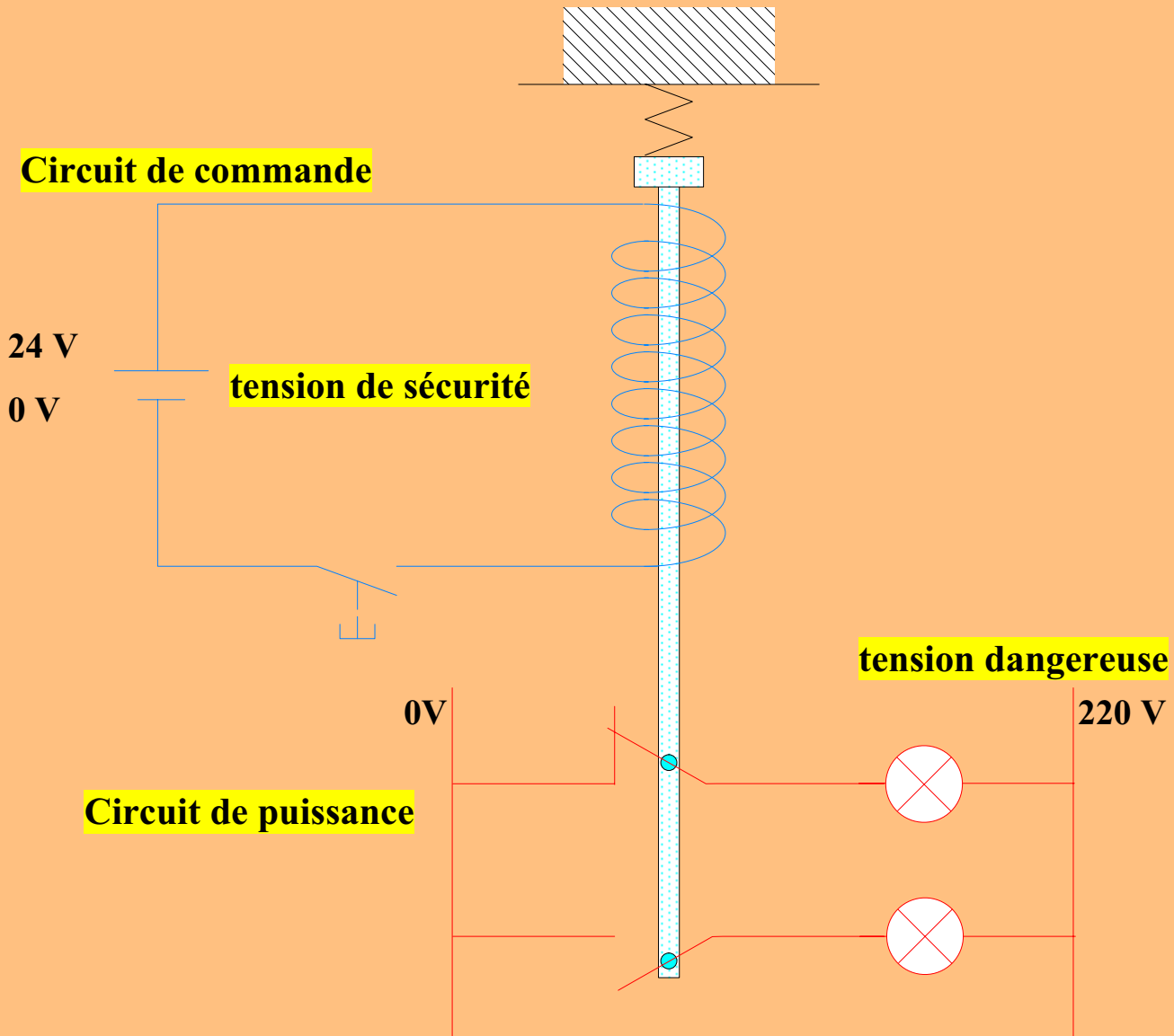
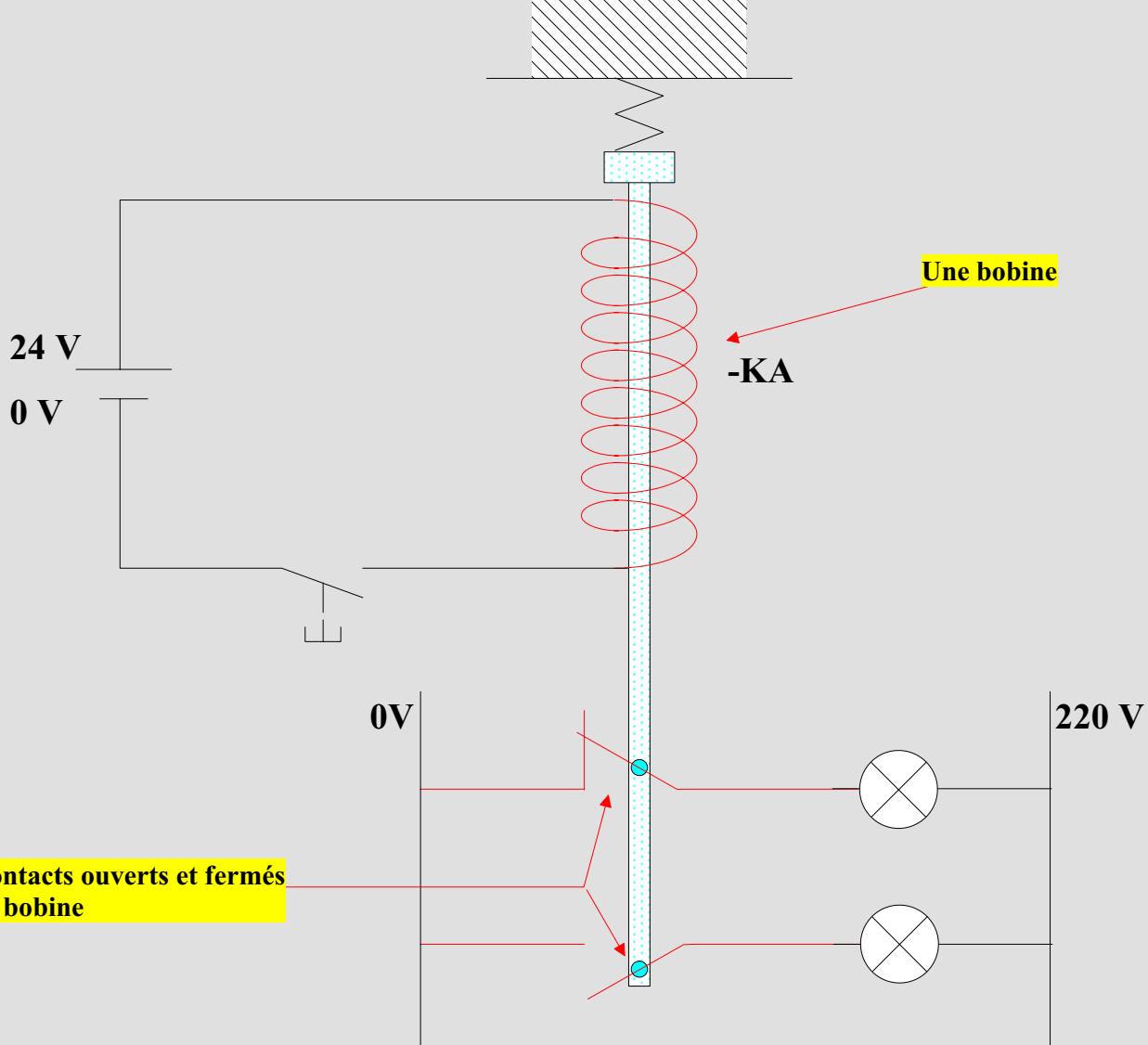
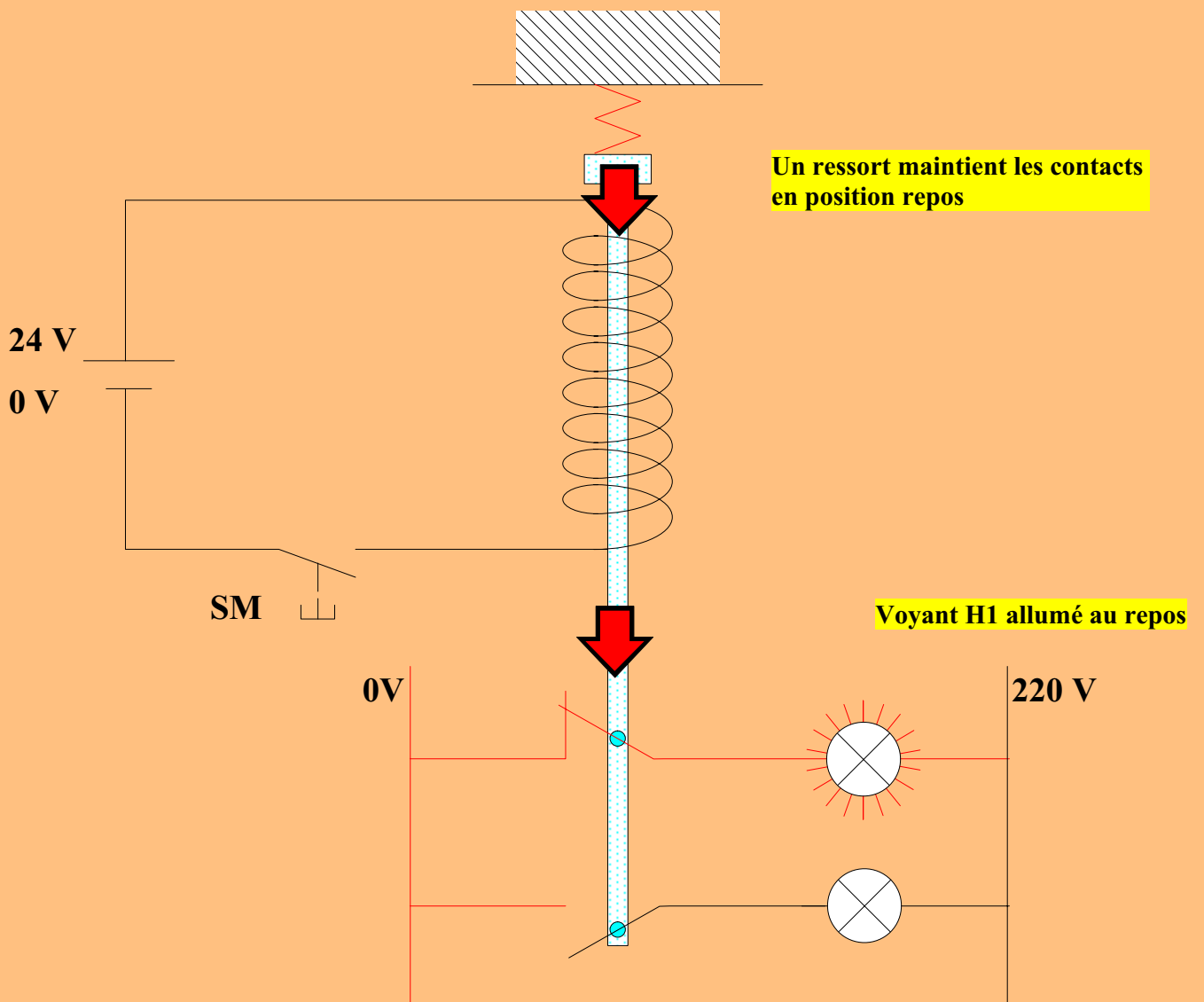
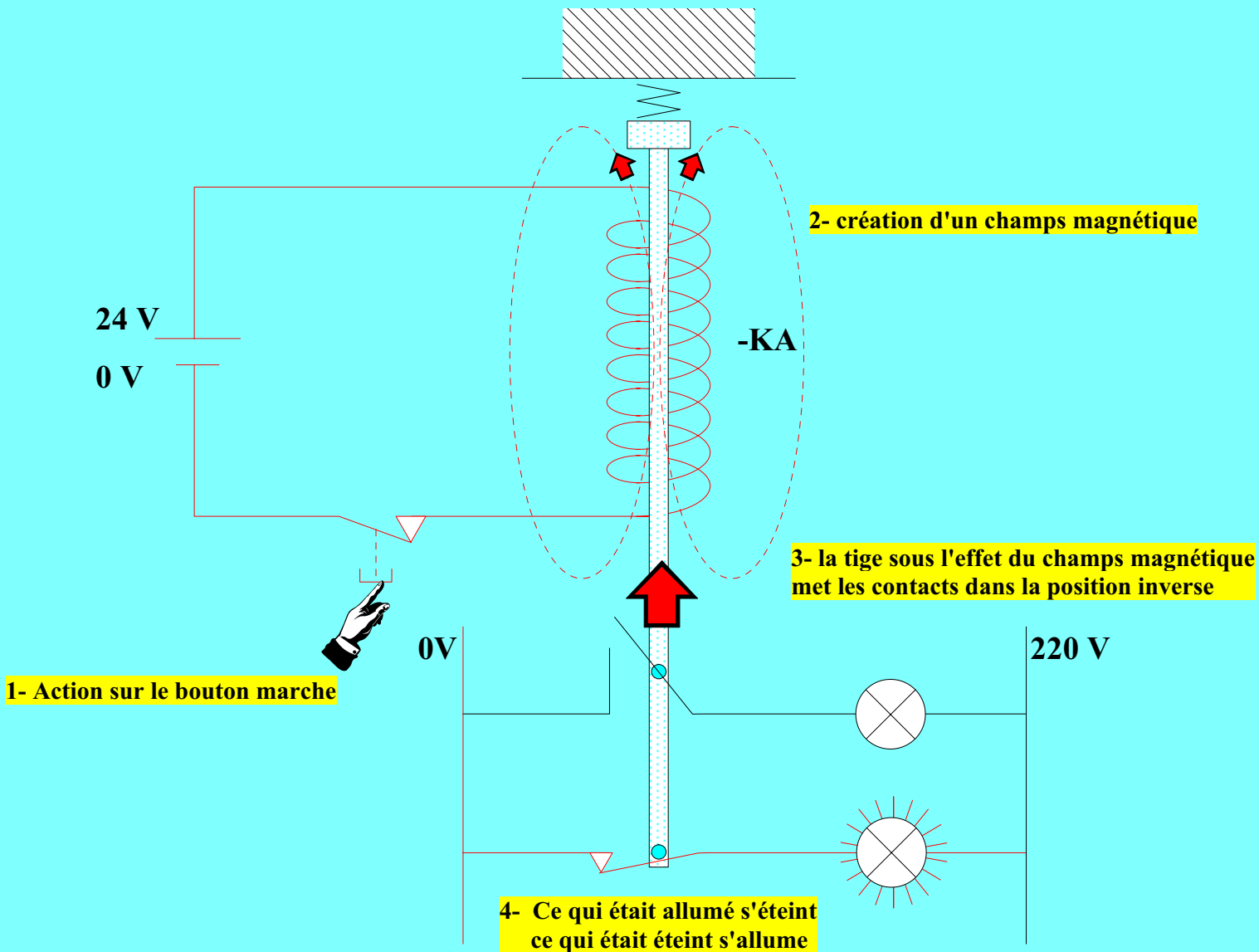


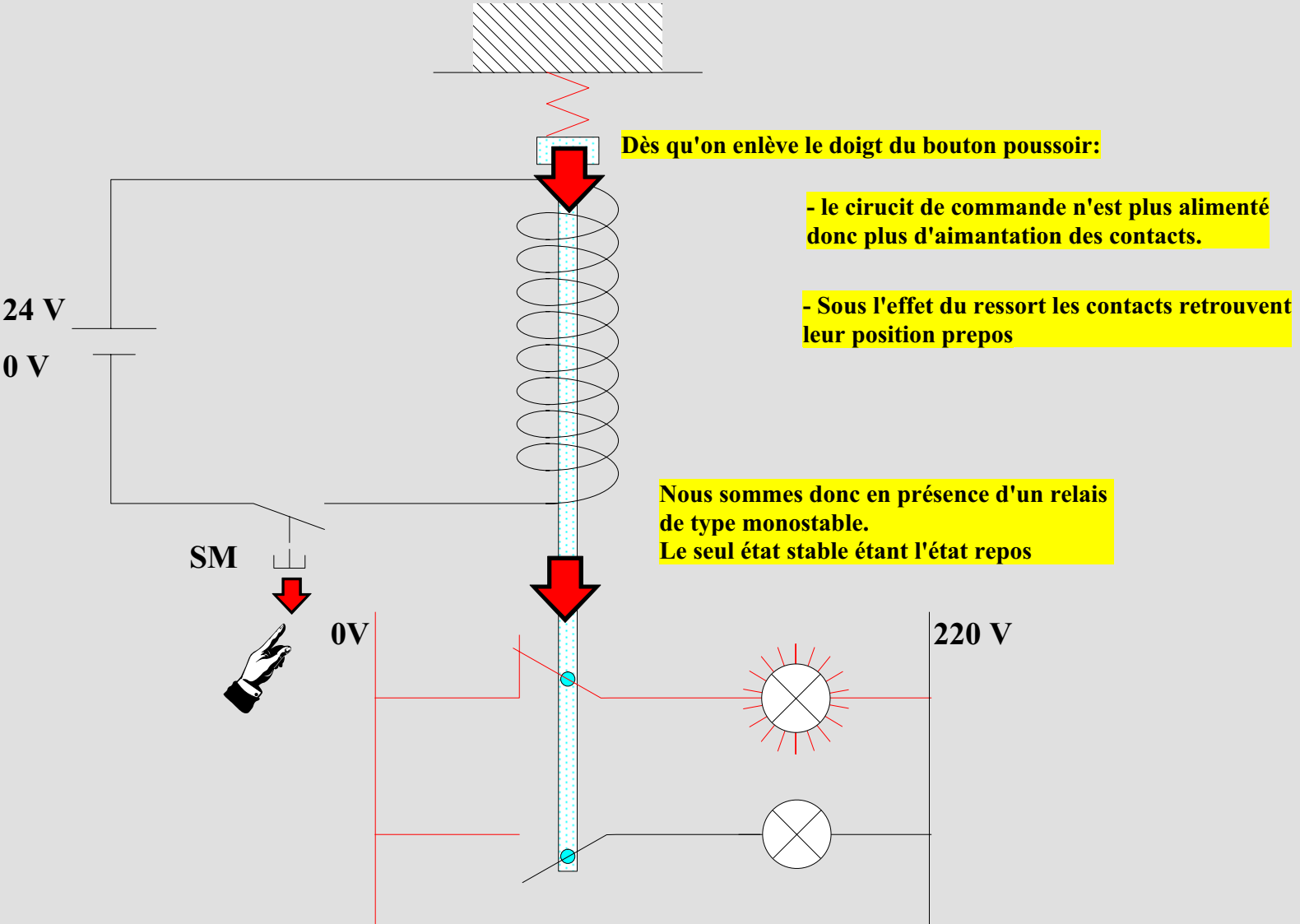
Les relais



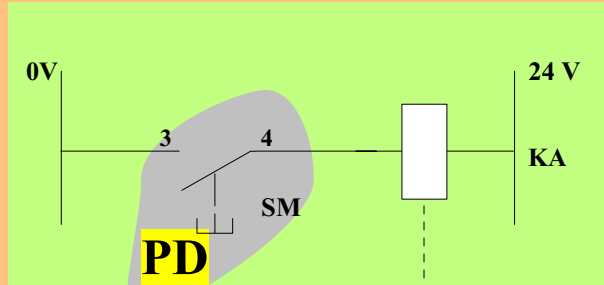
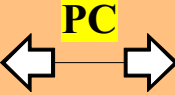
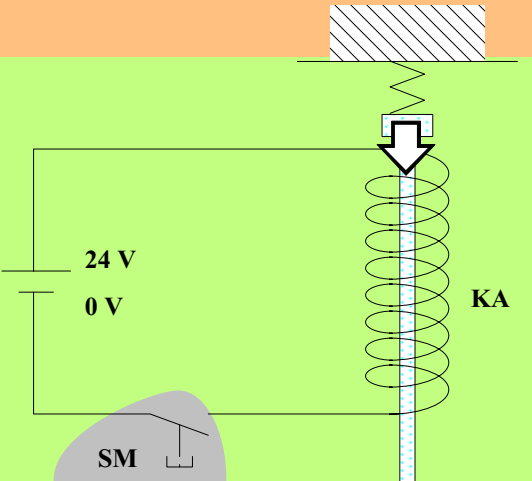




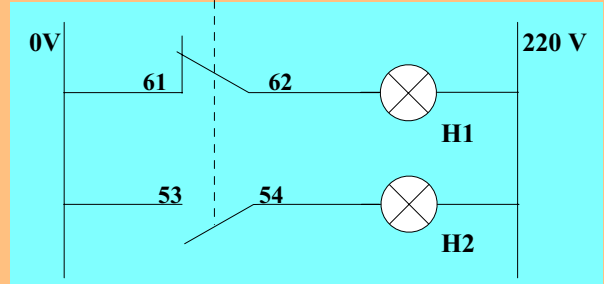
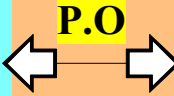
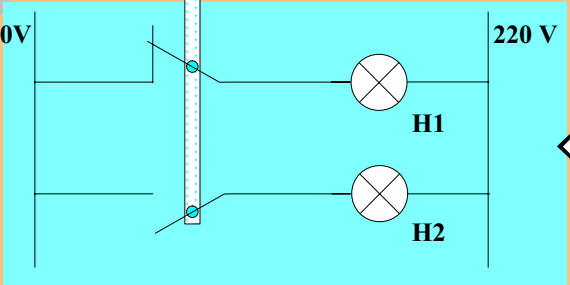




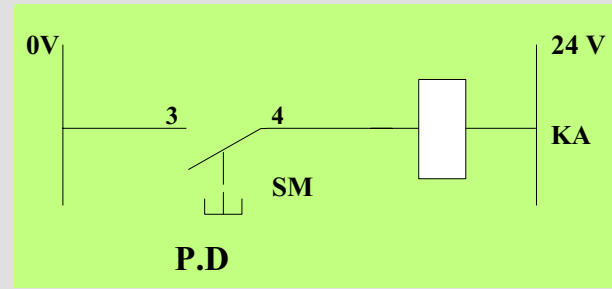
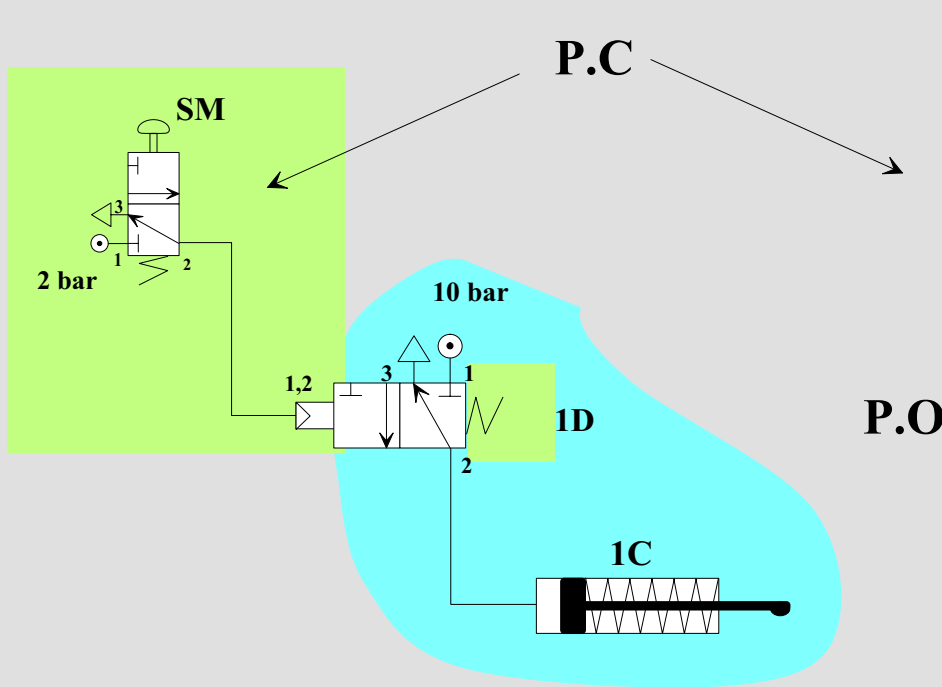
**Représentation du relai monostable:**



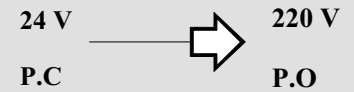
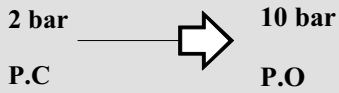
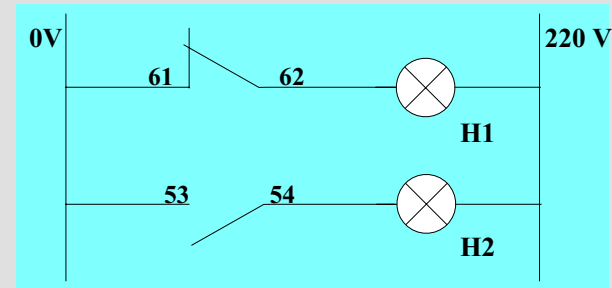
Facultatif



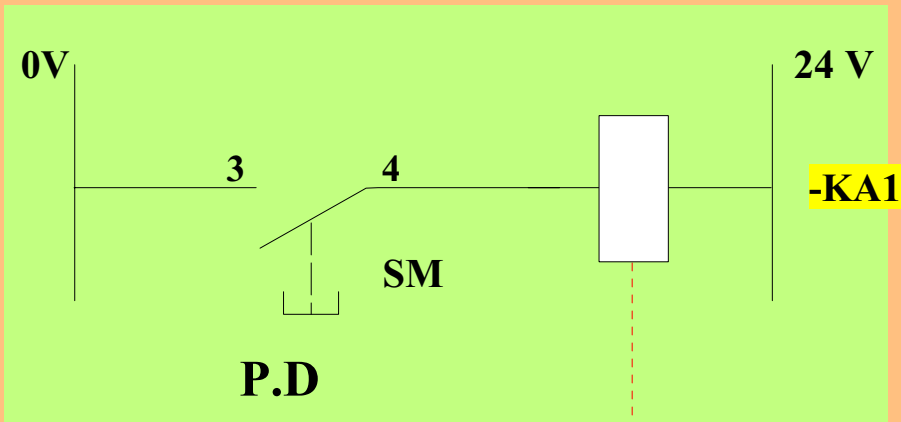
# Analogie: pneumatique - électrique



P.O





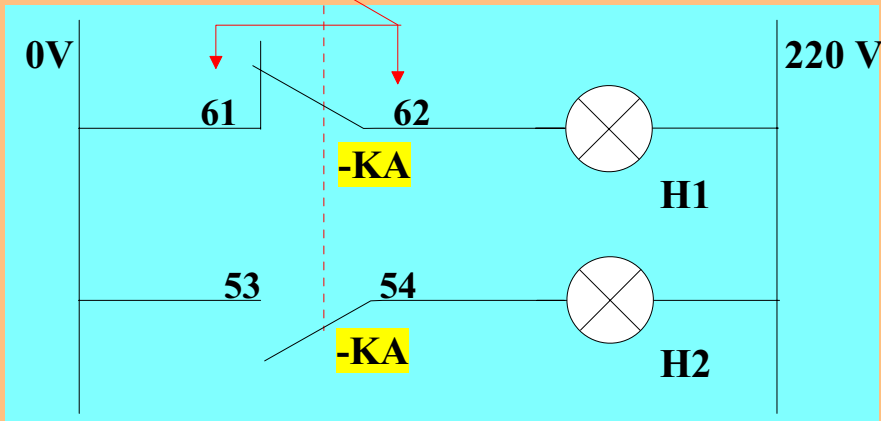


KA1: pour les relais  
 KM2 : pour les contacteur

Pour le câblage  
 il vaut mieux se repérer  
 aux numéros des contacts

Facultatif

On trouve aussi ce repérage:



-ka1. 1  
 -ka1. 2

Minuscules pour les contacts

le dernier chiffre à droite indique  
 le numéro du contact



**FIN**