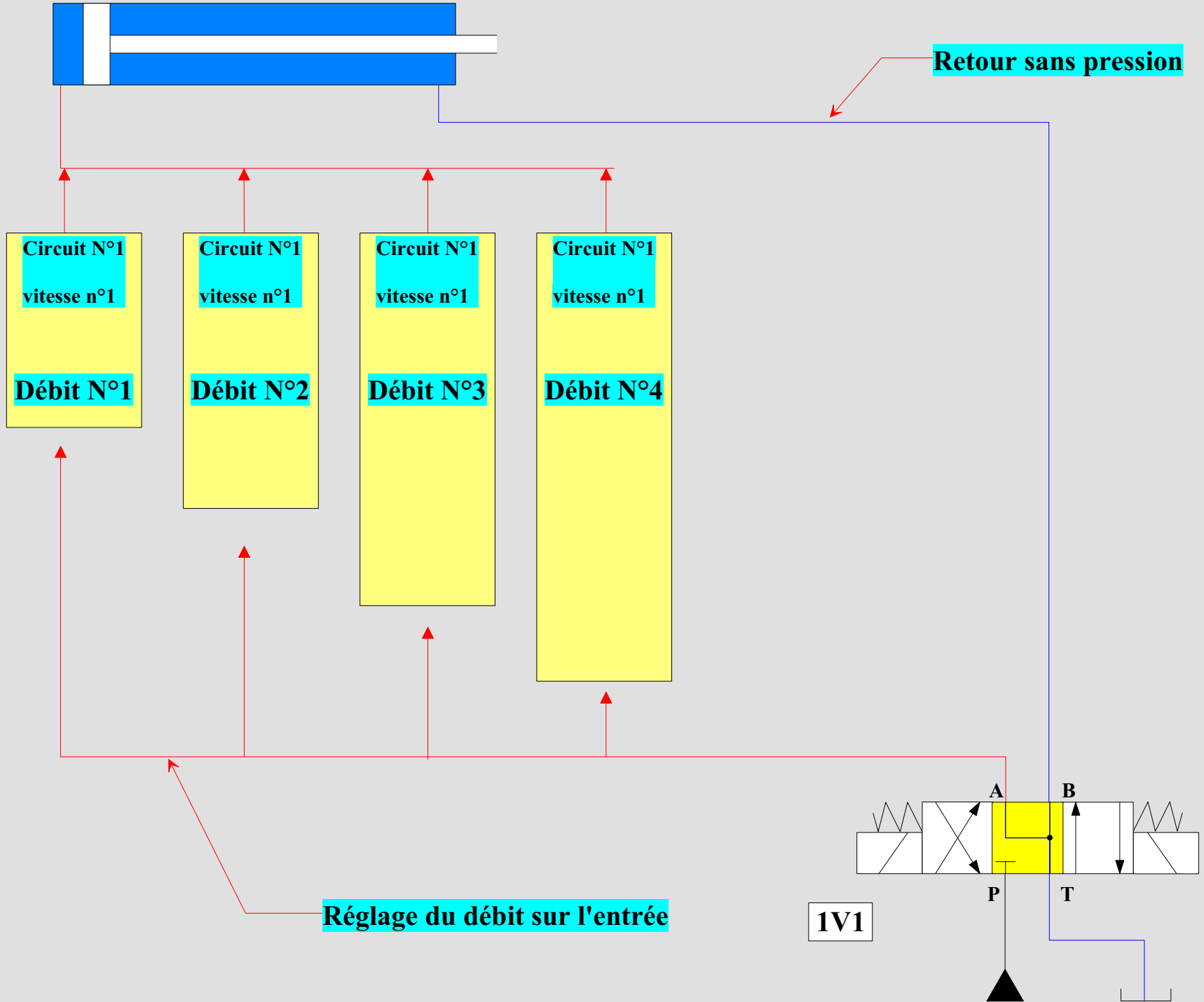


MULTIPLES VITESSES

# Avance table

1A

90/40x300



# Avance table

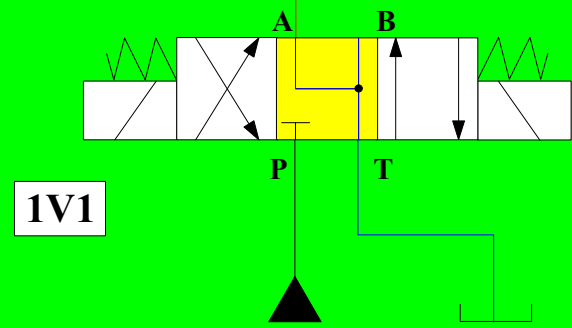
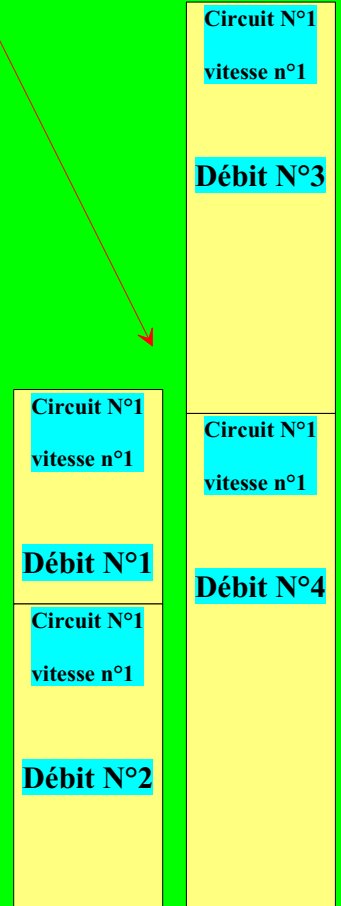
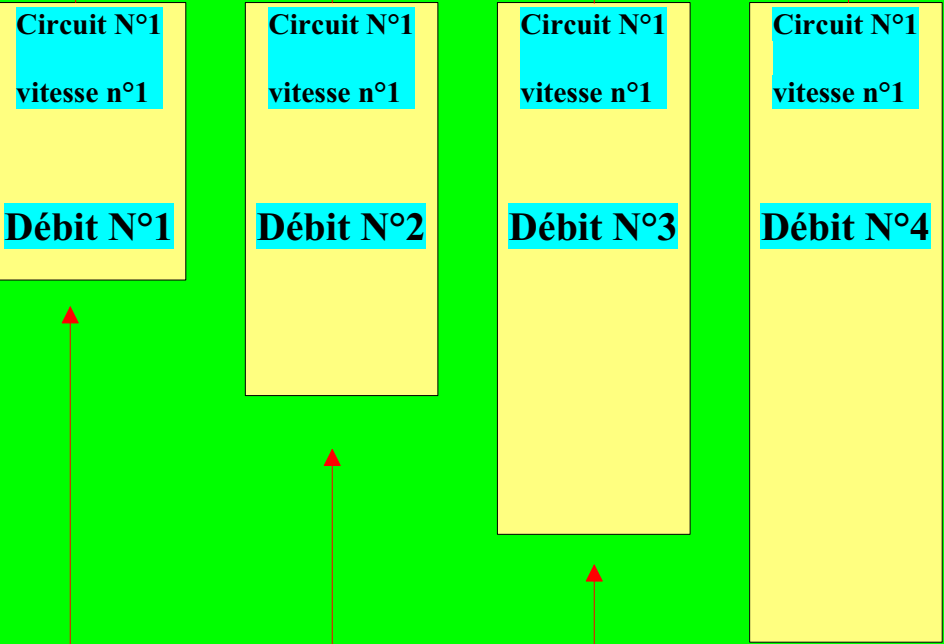
1A

90/40x300



On peut utiliser indépendamment chacun des débits

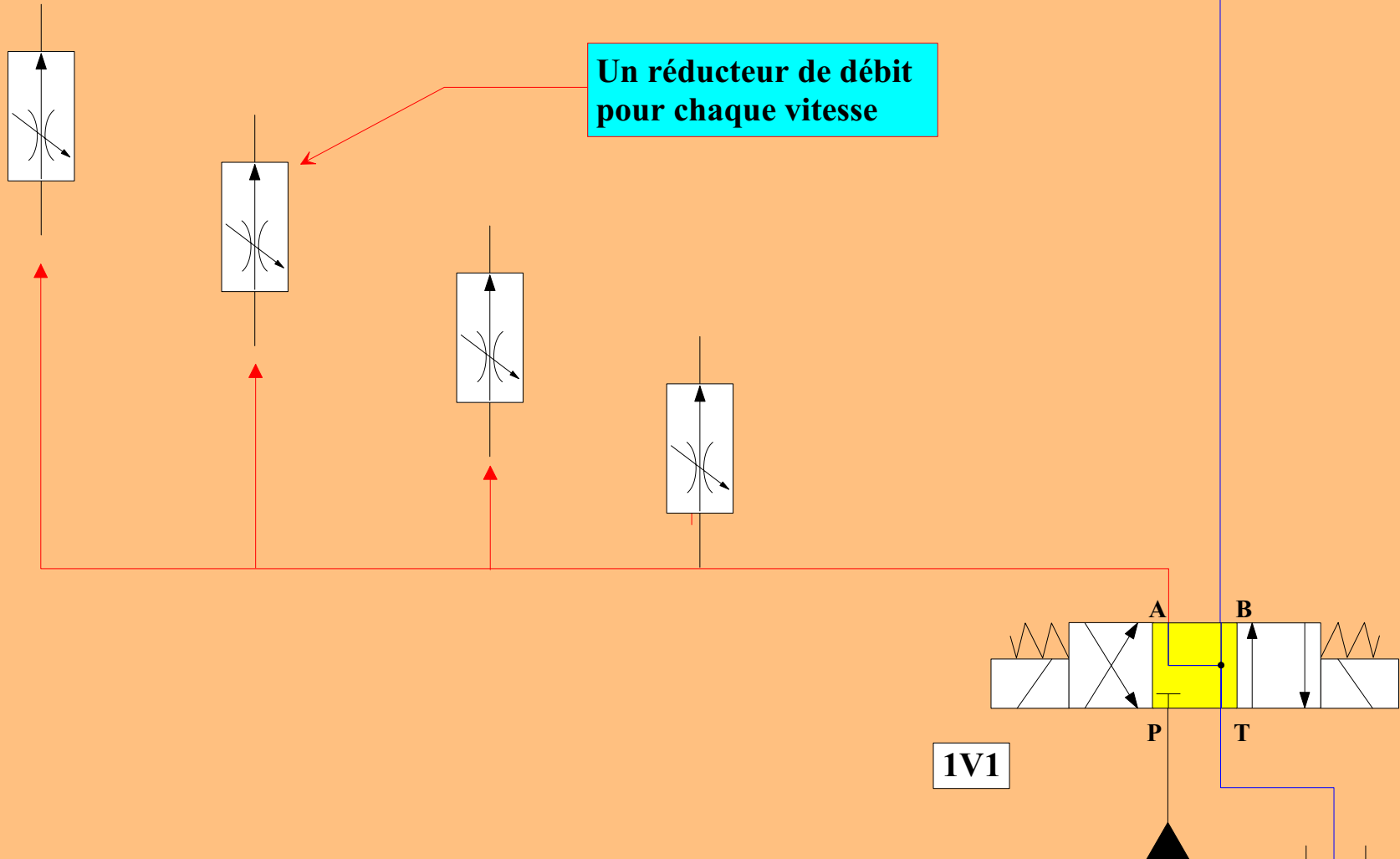
Ou combiner plusieurs débits



# Avance table

1A

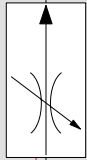
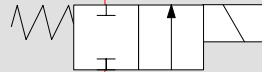
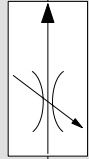
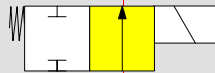
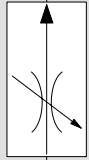
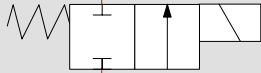
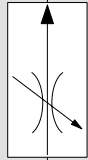
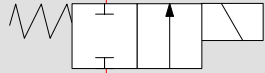
90/40x300



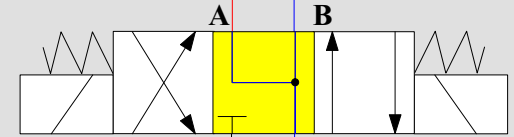
# Avance table

1A

90/40x300



Sélectionner ou ne pas sélectionner une vitesse



1V1

Avance table

24 VAC

1A

90/40x300



1S1

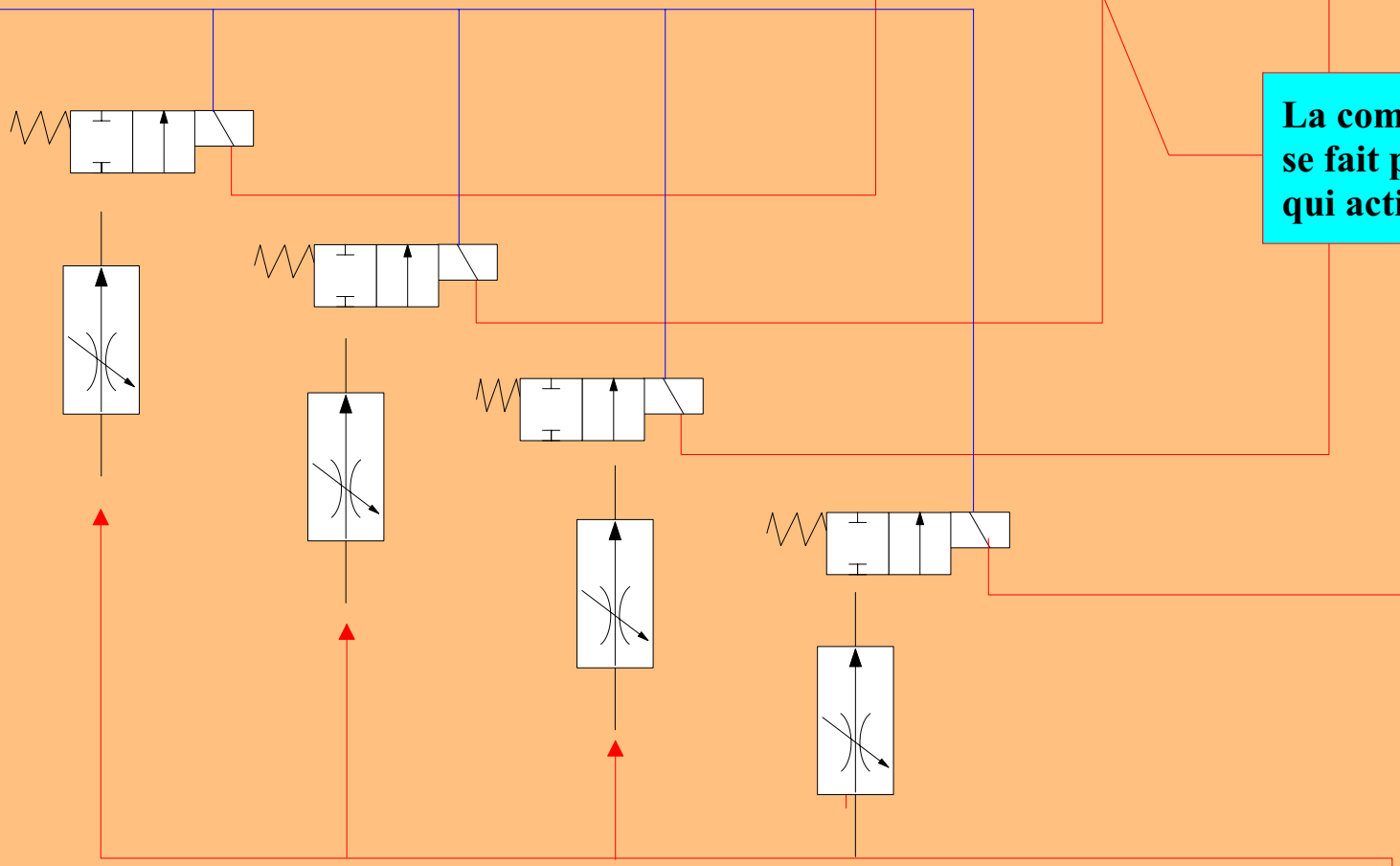
1S2

1S3

1S4

0V

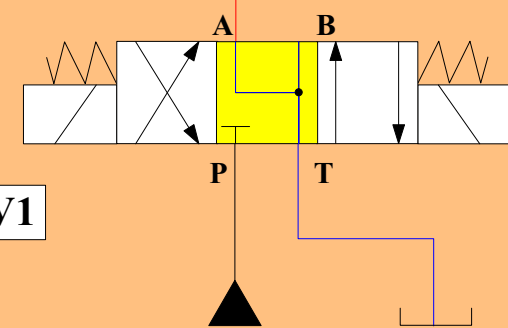
La commande de chaque bobine se fait par la tige du vérin qui actionne des capteurs



Inconvénient:

Pour combiner plusieurs débits il faut employer des relais

1V1



# Avance table

1A

90/40x300



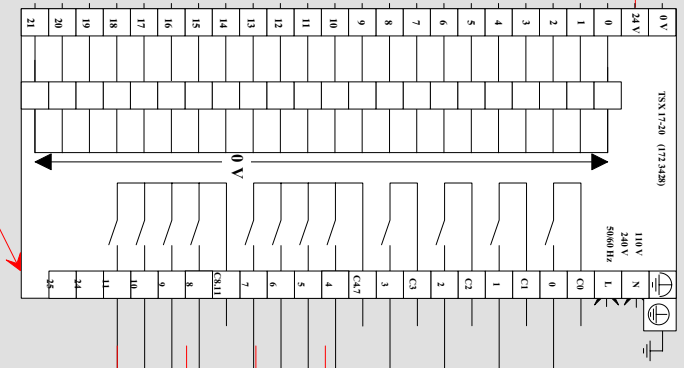
1S1

1S2

1S3

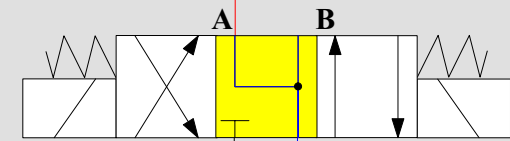
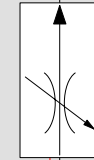
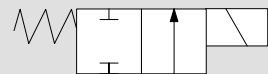
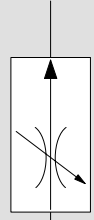
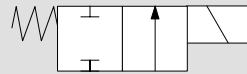
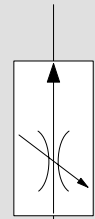
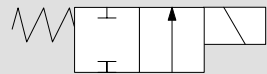
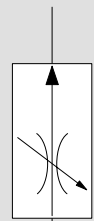
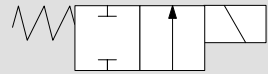
1S4

Automate



Interfaces

**2<sup>4</sup>** possibilités de débit donc de vitesses différentes



1V1